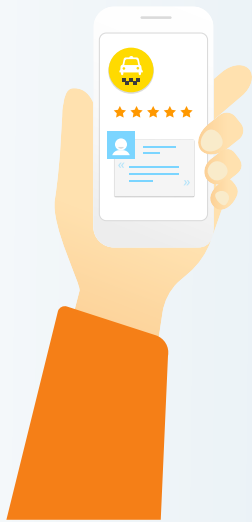


Mobile Conquesting

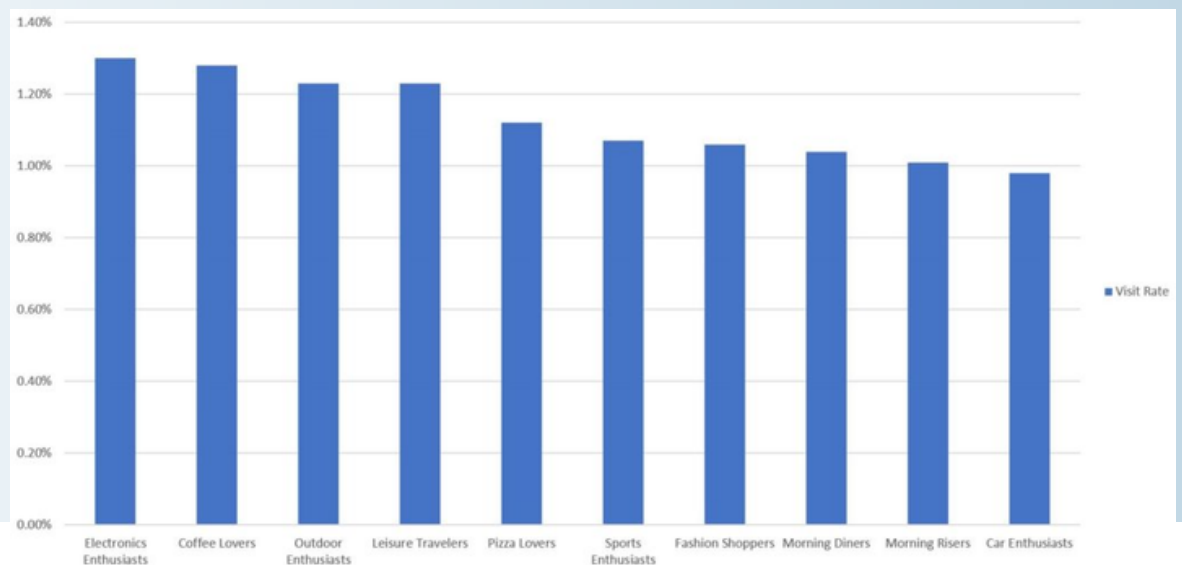
WHAT IS MOBILE CONQUESTING?

Mobile Conquesting™ allows us to advertise on their mobile devices within apps and mobile websites by utilizing accurate location, demographic, behavioral and visit data.



WHAT CAN YOU GET?

- Traffic to your business website
- Track of on-site visits created by the ad. We track the serving of an ad to a mobile device and if that mobile device come on to the client's physical address
- *Audience DNA* for campaign has been running for 60+ days (add-on service)



HOW DO WE TARGET YOUR ADS?



Targeting people who have shown a specific online behavior or recently been to related business



Target people in real time while at specific locations (your competitors businesses, your stores, event locations...)



We serve your ads when a weather condition happens or is forecasted



Continue to target people after they leave the locations we are geo-fencing



Address Targeting & Address Retargeting

Serve ads to people from a household list you have and continue to follow them after they leave



Continue to target people after they leave the geo-fencing locations and target those people's neighborhoods